



HOSHIZAKI

Counters and Cabinets Refrigerators and Freezers

Hoshizaki Europe B.V.
Keienbergweg 50 c/d
1101 GC Amsterdam
The Netherlands
Tel. +31 (0)20 6918499
Fax+31 (0)20 6918768
sales@hoshizaki.nl

Hoshizaki UK (UK, Ireland)
2 The Technology Centre
London Road
Swanley
Kent BR87AG
United Kingdom
Tel. +44 845 456 0585
Fax +44 1322 838331
Spare parts fax +44 1952 211475
uksales@hoshizaki.co.uk
ukparts@hoshizaki.co.uk

Hoshizaki Deutschland
(Germany, Switzerland, Austria)
Halskestraße 29
47877 Willich-Münchheide III
Germany
Tel. +49 2154/92810
Fax +49 2154/928128
info@hoshizaki.de

Hoshizaki France
Paris Nord II
13 Rue De La Perdrix
BP 44072 Tremblay En France
95913 Roissy Charles De Gaulle
Cedex
France
Tel. +33 1 48 63 93 80
Fax +33 1 48 63 93 88
info@hoshizaki.fr

Hoshizaki Belgium
(Belgium, Luxembourg)
Mechelsesteenweg 592
B-1930 Zaventem
Belgium
Tel. +32 2 712 30 30
Fax +32 2 712 30 31
info@hoshizaki.be

Hoshizaki Nederland
Keienbergweg 50 c/d
1101 GC Amsterdam
The Netherlands
Tel. +31 (0)20 6918499
Fax +31 (0)20 6918768
sales@hoshizaki.nl

Hoshizaki Iberia
(Spain, Portugal)
Edificio Torca
C/Pompeu Fabra, 55-63
08911 Badalona
Spain
Tel. +34.93.478.09.52
Fax +34.93.478.08.00
info@hoshizaki.es

Hoshizaki Middle East
tel: +971 50 914 87 61
email: info@hoshizaki.ae
www.hoshizaki.ae



HOSHIZAKI

www.hoshizaki.com



Combining low cost of ownership with premium reliability

Hoshizaki refrigeration products are designed for professional kitchens who demand a reliable easy to maintain product with a low cost of ownership.

The new Hoshizaki counter range comprises of standard models and 1/1 gastronorm counters, available as a refrigerator or freezer with two or three door sections.

All our refrigerators and freezers are carefully designed to ensure the optimal circulation of air at all time. Refrigerated air is circulated around the cabinet to maintain the storage of foodstuffs at the correct temperature using an energy efficient DC Fan.

The exterior and interior of the refrigerators and freezers are made of stainless steel. The counters have an inside door cover of grey ABS. The temperature range is between +12°C and -6°C on the refrigerators and -7°C and -25°C on the freezers.

These counters and cabinets offer great versatility as they can be used for different types of storage as requirements change or seasonal changes dictate menu variations.



Easy cleaning
Removable door gaskets for easy cleaning.



Adjustable shelves
The counter offers one height-adjustable shelf per section as standard.



Hygienic design
Dished stainless interior and base with rounded edges for easy cleaning.



Castors or legs
A choice between lockable castors and adjustable legs. The leg height can be adjusted from 150 to 180 mm.



User-friendly controller
Control panel with digital thermometer/thermostat for accurate control and easy reading. A transparent plastic cover protects against accidental adjustment of temperature and fluid spillage.



Easy service
A compact slide out refrigeration unit for easy maintenance and service access.



Easy maintenance
Easy access to front loaded air filter for cleaning.

Hoshizaki counter refrigerators and freezers



Hoshizaki cabinet refrigerators and freezers



Counter refrigerators



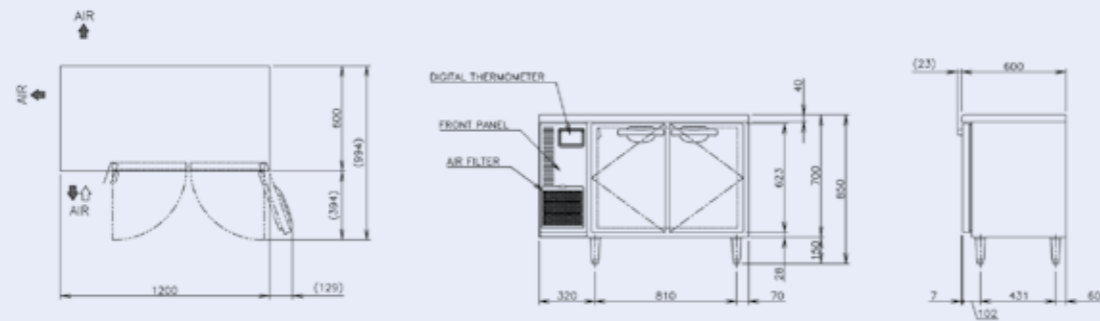
	RTE12oSNA	RTE15oSNA	RTE18oSNA	RTE12oSDA-GN 2/1	RTE17oSDA-GN 2/1
Net capacity (L)	222	305	385	265	412
Temperature (°C)	-6 to 12	-6 to 12	-6 to 12	-6 to 12	-6 to 12
Dimensions (WxDxH, mm)	1200x600x850-880	1500x600x850-880	1800x600x850-880	1200x700x850-880	1660x700x850-880
Electrical supply	1/220-240V/50Hz	1/220-240V/50Hz	1/220-240V/50Hz	1/220-240V/50Hz	1/220-240V/50Hz
Electrical consumption (kW)	0,28	0,29	0,31	0,28	0,30
Refrigerant	R134A	R134A	R134A	R134A	R134A
Weight (kg)	77-86	89-99	103-115	83-93	103-115

Counter freezers

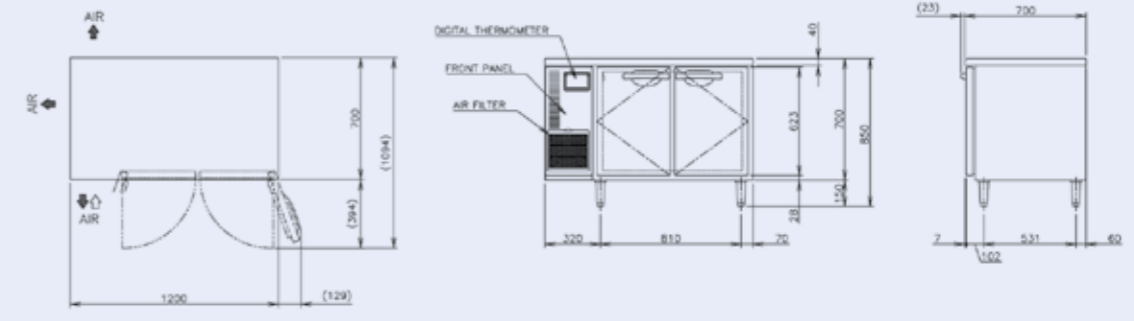


	FTE12oSNA	FTE15oSNA	FTE18oSNA	FTE12oSDA-GN 2/1	FTE17oSDA-GN 2/1
Net capacity (L)	222	305	385	265	412
Temperature (°C)	-25 to -7	-25 to -7	-25 to -7	-25 to -7	-25 to -7
Dimensions (WxDxH, mm)	1200x600x850-880	1500x600x850-880	1800x600x850-880	1200x700x850-880	1660x700x850-880
Electrical supply	1/220-240V/50Hz	1/220-240V/50Hz	1/220-240V/50Hz	1/220-240V/50Hz	1/220-240V/50Hz
Electrical consumption (kW)	0,66	0,66	0,95	0,66	0,90
Refrigerant	R404A	R404A	R404A	R404A	R404A
Weight (kg)	81-90	92-102	109-121	87-97	109-121

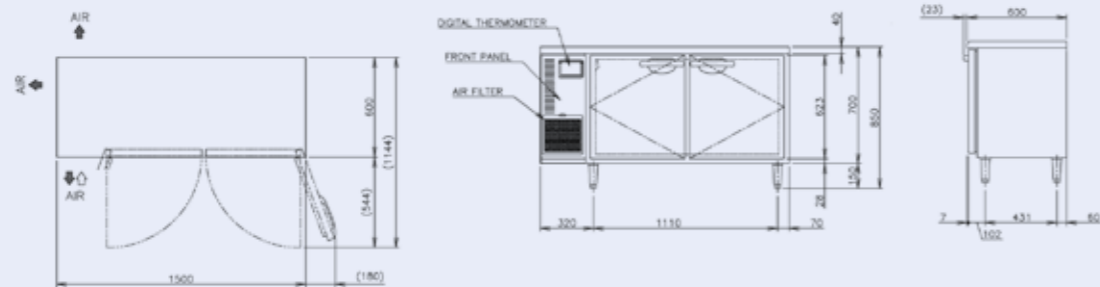
RTE12oSNA /
FTE12oSNA



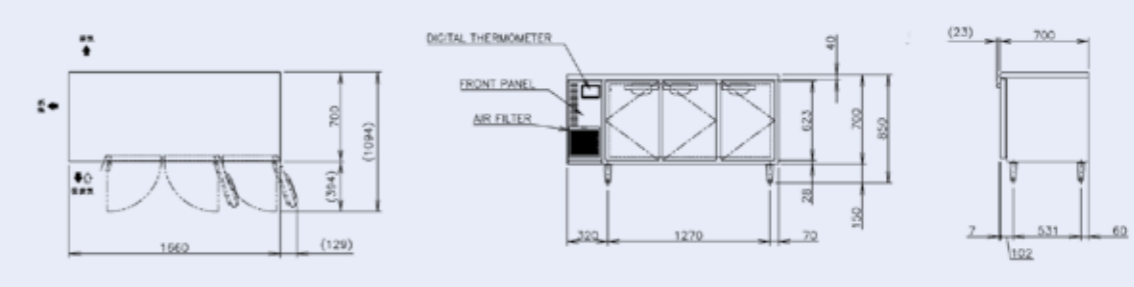
RTE12oSDA-GN 2/1 /
FTE12oSDA-GN 2/1



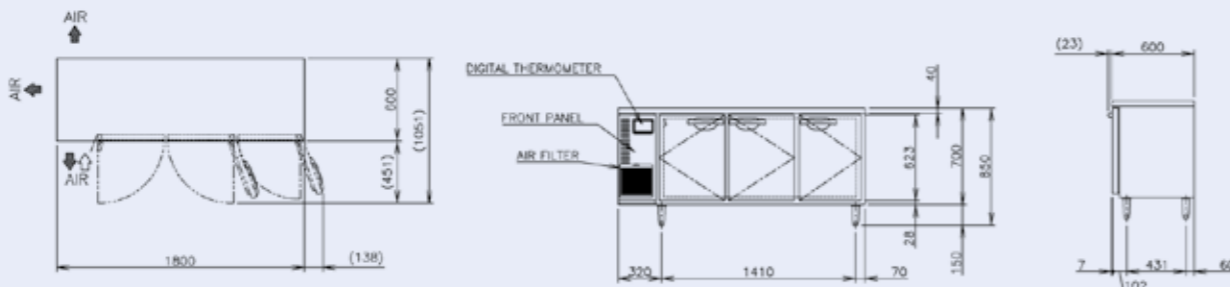
RTE15oSNA /
FTE15oSNA



RTE17oSDA-GN 2/1 /
FTE17oSDA-GN 2/1



RTE18oSNA /
FTE18oSNA



Cabinet refrigerators



	HRE70B	HRE70B-2 (2 doors)	HRE140B	HRE140B-4 (4 doors)
Net capacity (L)	631	631	1379	1379
Temperature (°C)	0 to 16	0 to 16	0 to 16	0 to 16
Dimensions (WxDxH, mm)	700x850x2040	700x850x2040	1400x850x2040	1400x850x2040
Electrical supply	1/220-240V/50Hz	1/220-240V/50Hz	1/220-240V/50Hz	1/220-240V/50Hz
Electrical consumption (kW)	0,348	0,348	0,501	0,501
Refrigerant	R134A	R134A	R134A	R134A
Weight (kg)	116	116	164	164

Cabinet freezers



	HFE70B	HFE70B-2 (2 doors)	HFE140B	HFE140B-4 (4 doors)
Net capacity (L)	631	631	1372	137
Temperature (°C)	-25 to -7	-25 to -7	-25 to -7	-25 to -7
Dimensions (WxDxH, mm)	700x850x2040	700x850x2040	1400x850x2040	1400x850x2040
Electrical supply	1/220-240V/50Hz	1/220-240V/50Hz	1/220-240V/50Hz	1/220-240V/50Hz
Electrical consumption (kW)	0,572	0,572	0,723	0,723
Refrigerant	R404A	R404A	R404A	R404A
Weight (kg)	116	116	174	174

HRE70B / HRE70B-2
HFE70B / HFE70B-2

HRE140B / HRE140B-4
HFE140B / HFE140B-4

