

NO. 24HE-2476

ISSUED: JAN.2002

REVISED: APL..2011



**HOSHIZAKI
CRESCENT ICE DISPENSER**

**MODEL DIM-30AE
DIM-30DE**

PARTS LIST

(HE) (OCEANIA)

A-1	AUG.	2001	G-0	JAN.	2007
B-0	NOV.	2001	H-0	JAN.	2008
B-1	DEC.	2001	J-0	JAN.	2009
C-0	DEC.	2002	J-1	APR.	2009
D-0	DEC.	2003	K-0	JAN.	2010
E-1	DEC.	2004	L-0	JAN.	2011
F-0	DEC.	2005	L-1	MAR.	2011

MATERIAL ABBREVIATIONS

ALUMINUM

AL = Aluminum

COPPER

CU = Copper

PLASTIC

ABS = Acrylonitrile -butadiene - styrene
AC = Polyacetal
EVA = Ethylene vinyl acetate
PA = Polyamide = Nylon
PC = Polycarbonate
PE = Polyethylene
PES = Polyester
PETP = Polyethylene terephthalate = Tetlon
PP = Polypropylene
PS = Polystyrene
PTFE = Polytetrafluoroethylene = Teflon
PUR = Polyurethane
PVC = Polyvinyl chloride

RUBBER

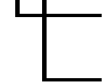
VN = Vinyl Nitrile
EPDM = EP rubber
NBR = Nitrile butadiene rubber
NR = Natural rubber
NP = Neoprene
SI.R = Silicone rubber
SY.R = Synthetic rubber
EPH = Epichlorohydrin

STEEL

GS = Galvanized steel
SS = Stainless steel
PS = Plated steel
PAS = Primed steel

AUXILIARY CODE

K-0



Designates the year. "K" indicates the year 2000. Years progress or regress in alphabetical order. "J" is 1999, "L" is 2001, "M" is 2002, and so on. The letters "I" and "O" were skipped.

Designates significant part changes within the same year. Base is 0 and this number advances for each change.

Example: P-1



"P" indicates 2004.

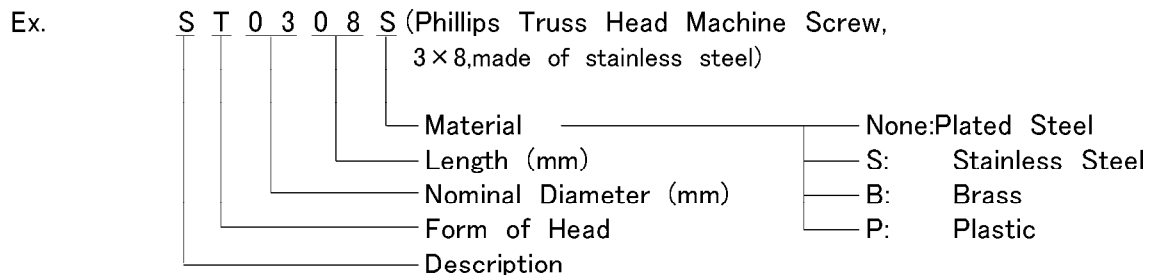
"1" indicates the first significant part change for 2004.

MARKS LOCATED UNDER THE AUXILIARY CODE

- = Part deleted.
- x = Part deleted and replaced by "o" part.
- o = New part in place of "x" part.

FASTENER ABBREVIATION LIST

ST	=	Phillips Truss Head Machine Screw
SP	=	Phillips Pan Head Machine Screw
SF	=	Phillips Flat Head Machine Screw
SS	=	Phillips Pan Head Machine Screw with Split Lock Washer
SW	=	Phillips Pan Head Machine Screw with Split Lock Washer and Flat Washer
T1	=	Phillips Truss Head Tapping Screw (Correspond to Type A)
T2	=	Phillips Truss Head Tapping Screw (Correspond to Type B)
T3	=	Phillips Truss Head Tapping Screw (Correspond to Type C)
FT	=	Phillips Truss Head Tapping Screw (Special)
BH	=	Hexagon Head Bolt
BC	=	Socket Head Cap Screw
BS	=	Hexagon Bolt with Split Washer
BW	=	Hexagon Bolt with Split Washer and Flat Washer
BF	=	Hexagon Flange Bolt
BR	=	Cross-Recessed Hexagon Head Bolt
BRW	=	Cross-Recessed Hexagon Head Bolt with Split Lock Washer and Flat Washer
WL	=	Split Lock Washer
WT	=	External Tooth Washer
WF	=	Flat Washer
WS	=	Spring Washer
NH	=	Hexagon Nut
NF	=	Hexagon Flange Nut
NC	=	Hexagon Cap Nut
NS	=	Square Nut
NW	=	Wing Nut



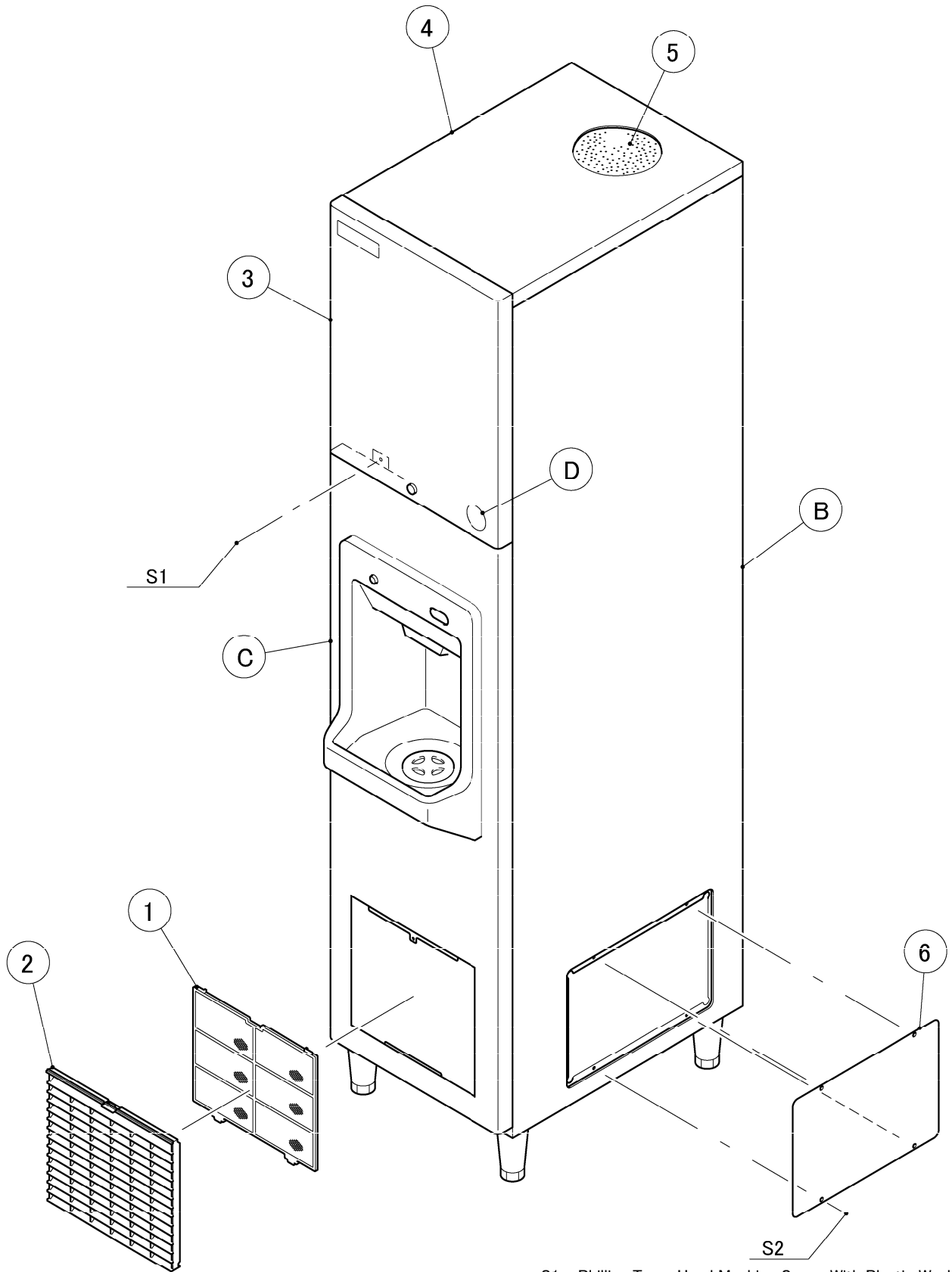
(Note) Second character is numerical except the list.
 Ex: S1,S2,B3 etc.

And abbreviations and names are shown under the illustration.

DIM-30AE
DIM-30DE

A. BODY ASSY

(H-0)(J-0)and later
(D-0)(E-1)(F-0)(G-0)
(A-1)(B-0)(B-1)(C-0)



S1 - Phillips Truss Head Machine Screw With Plastic Washer
S2 - Phillips Truss Head Tapping Screw With Plastic Washer

HE,OCEANIA

MODEL : DIM-30AE,DIM-30DE				TITLE : B. ICE DISPENSER ASSY			
INDEX NO.	DESCRIPTION	MATERIAL OR MODEL NUMBER	PART NUMBER	REQ'D NUMBER			
				A-1 B-0	B-1,C-0 D-0	E-1,F-0 G-0,H-0 J-0	J-1 K-0 L-0
E	ICE MAKING UNIT ASSY	-	2H5089A02	1	1	1	1
F	REFRIGERATION ASSY	-	-	1	1	1	1
G	WATER CIRCUIT ASSY	-	-	1	1	1	1
H	DISPENSING MOTOR ASSY	-	2H5091A01	1	1	1	1
J	CONTROL BOX ASSY	-	2H5279A01	1	1	-	-
		-	2H5279A03			1	-
		-	2H5279A04				1
		(with Wash Switch)	2H5279001			1	1
K	BIN SWITCH ASSY	-	336637A02	1	1	1	1
N	SWITCH BOX	-	3X5740A01	1	1	1	1
1	BODY	(DIM-30AE)	1H2418G02	1	1	1	1
		(DIM-30DE)	1H2418G05				1
2	RIVET	SSD42SSBS	7170-0002	6	6	6	6
3	SPACER	PTFE	418704-01	1	1	1	1
4	DRAIN PAN	ABS	2H5088G01	1	1	1	1
5	THUMBSCREW	ABS, S.S	4H3270G02	2	2	2	2
6	SILICONE HOSE	L=170	1H2417-11	1	1	1	1
7	TIE	CV-70	7920-0001	1	1	1	1
8	THUMBSCREW	ABS, S.S	4H3270G02	2	2	2	2
9	COVER - WV	G.S	3X5358-01	1	1	1	1
10	GUIDE - AIR	G.S	3X5359G01	1	1	1	1
11	COVER (A) - REFRIGERATOR	G.S	3X5360A02	1	1	1	1
12	COVER (B) - REFRIGERATOR	G.S	3X5361A01	1	1	1	1
13	INSULATION	PE	423689-02	1	1	1	1
14	INSULATION	PE	4X9071-01	1	1	1	1
15	PIPE COVER	G.S	1H2436-01	1	1	1	1
16	REAR PANEL	G.S	3X5362-01	1	1	1	1
17	CLIP	PA	423602-04	4	4	4	4
18	POWER SUPPLY CORD	(CONT)	450412-01	1	1	1	1
		(UK)	452359-01	1	1	1	1
		(OCEANIA)	458139-01				1
19	CORD BUSHING	PA	448949-01	1	1	1	1
20	COVER - TRANSFORMER	G.S	340273-01	1	1	1	1

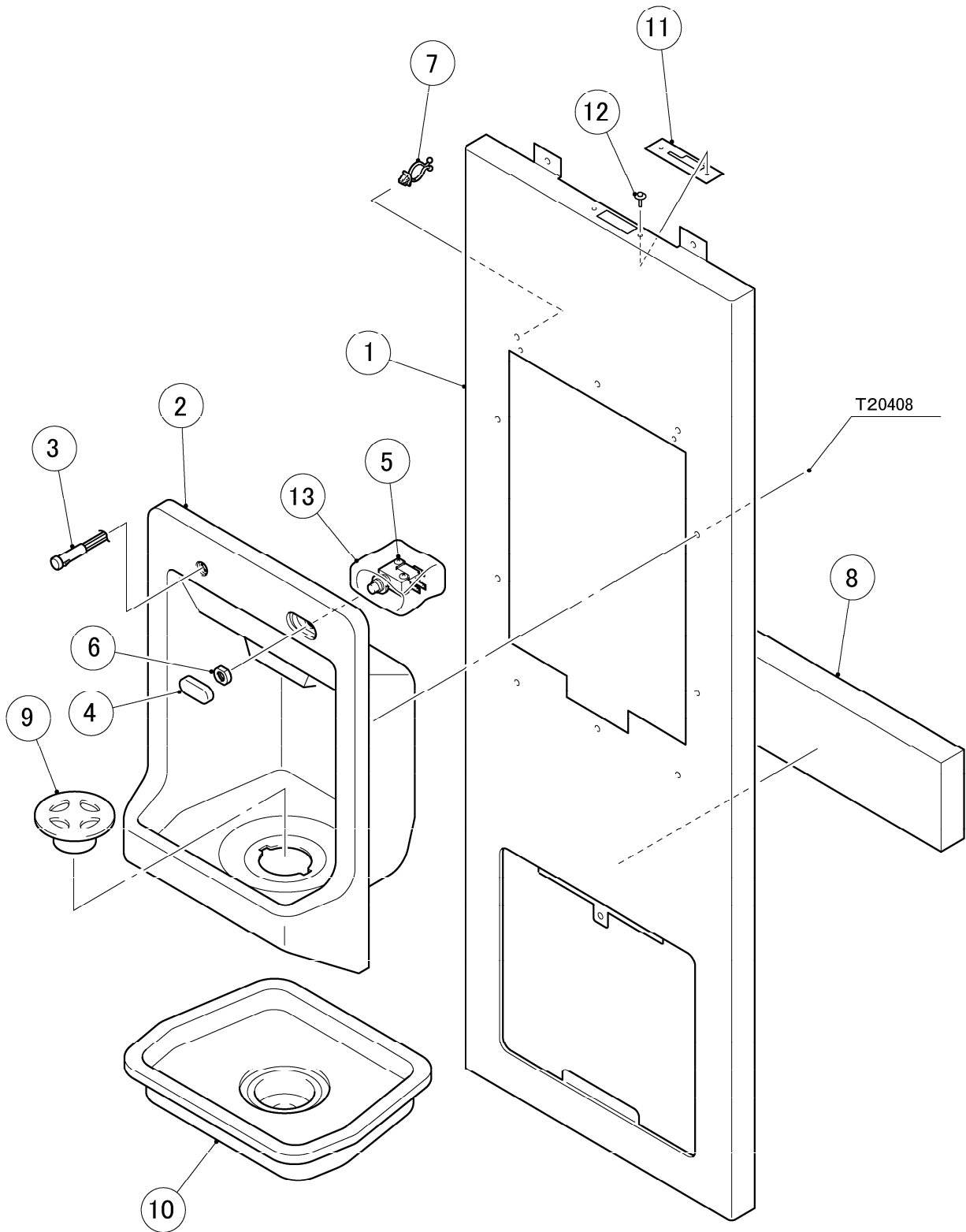
HE,OCEANIA

MODEL : DIM-30DE				TITLE : B. ICE DISPENSER ASSY			
INDEX NO.	DESCRIPTION	MATERIAL OR MODEL NUMBER	PART NUMBER	REQ'D NUMBER			
				L-1			
E	ICE MAKING UNIT ASSY	-	2H5089A02	1			
F	REFRIGERATION ASSY	-	-	1			
G	WATER CIRCUIT ASSY	-	-	1			
H	DISPENSING MOTOR ASSY	-	2H5091A01	1			
J	CONTROL BOX ASSY	-	2H5279A04	1			
		(with Wash Switch)	2H5279001	1			
K	BIN SWITCH ASSY	-	336637A02	-			
			336637A01	1			
N	SWITCH BOX	-	3X5740A01	-			
			3Y5687A01	1			
1	BODY	-	1H2418G05	1			
2	RIVET	SSD42SSBS	7170-0002	6			
3	SPACER	PTFE	418704-01	1			
4	DRAIN PAN	ABS	2H5088G01	1			
5	THUMBSCREW	ABS, S.S	4H3270G02	2			
6	SILICONE HOSE	L=170	1H2417-11	1			
7	TIE	CV-70	7920-0001	1			
8	THUMBSCREW	ABS, S.S	4H3270G02	2			
9	COVER - WV	G.S	3X5358-01	1			
10	GUIDE - AIR	G.S	3X5359G01	1			
11	COVER (A) - REFRIGERATOR	G.S	3X5360A02	-			
			3X5360A04	1			
12	COVER (B) - REFRIGERATOR	G.S	3X5361A01	1			
13	INSULATION	PE	423689-02	1			
14	INSULATION	PE	4X9071-01	1			
15	PIPE COVER	G.S	1H2436-01	1			
16	REAR PANEL	G.S	3X5362-01	1			
17	CLIP	PA	423602-04	4			
18	POWER SUPPLY CORD	(CONT)	450412-01	1			
		(UK)	452359-01	1			
		(OCEANIA)	458139-01	1			
19	CORD BUSHING	PA	448949-01	1			
20	COVER - TRANSFORMER	G.S	340273-01	1			

DIM-30AE
DIM-30DE

C. FRONT PANEL (LOWER) ASSY

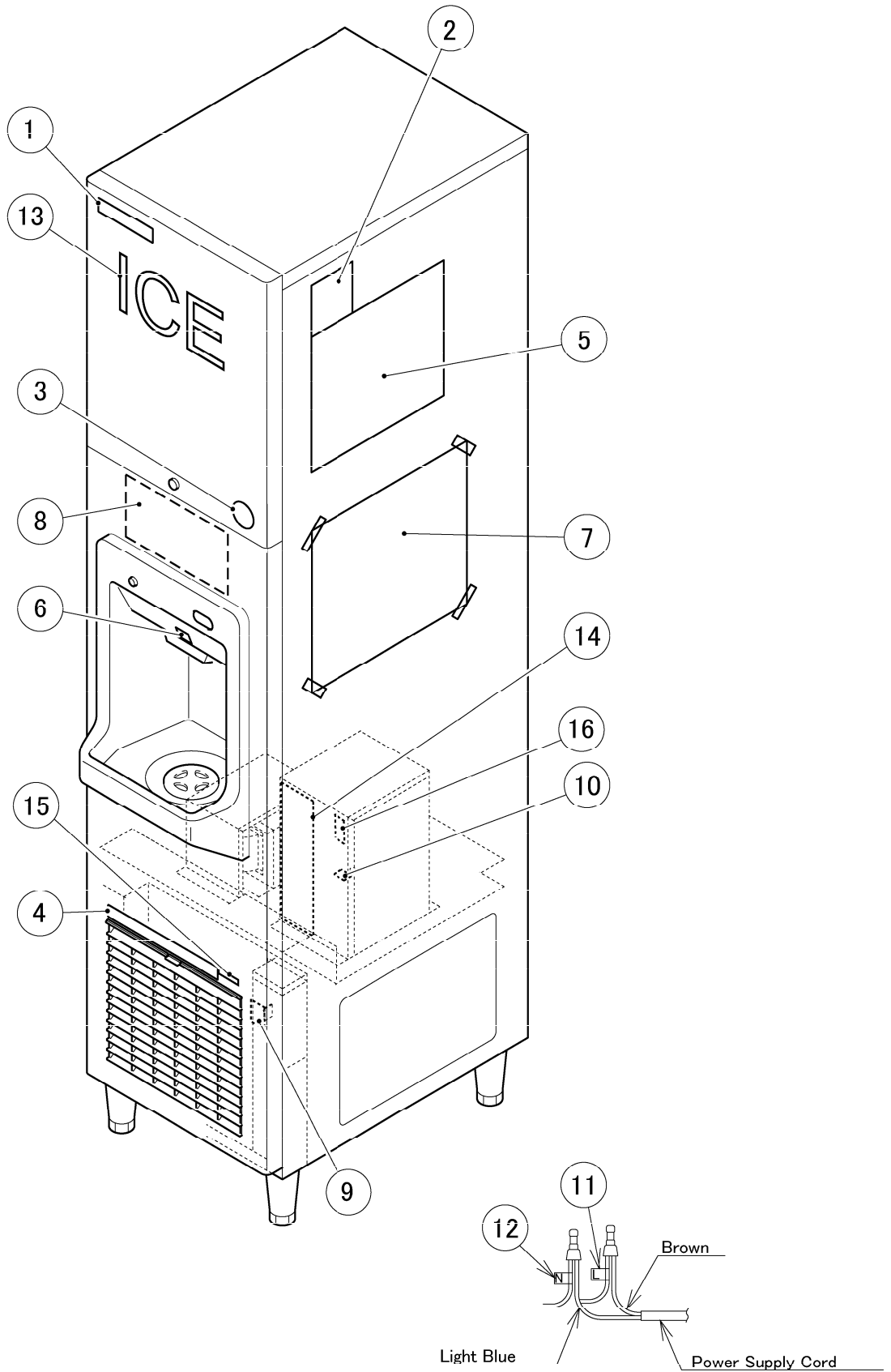
(H-0)(J-0)and later
(D-0)(E-1)(F-0)(G-0)
(A-1)(B-0)(B-1)(C-0)



DIM-30AE
DIM-30DE

D. LABEL LOCATION

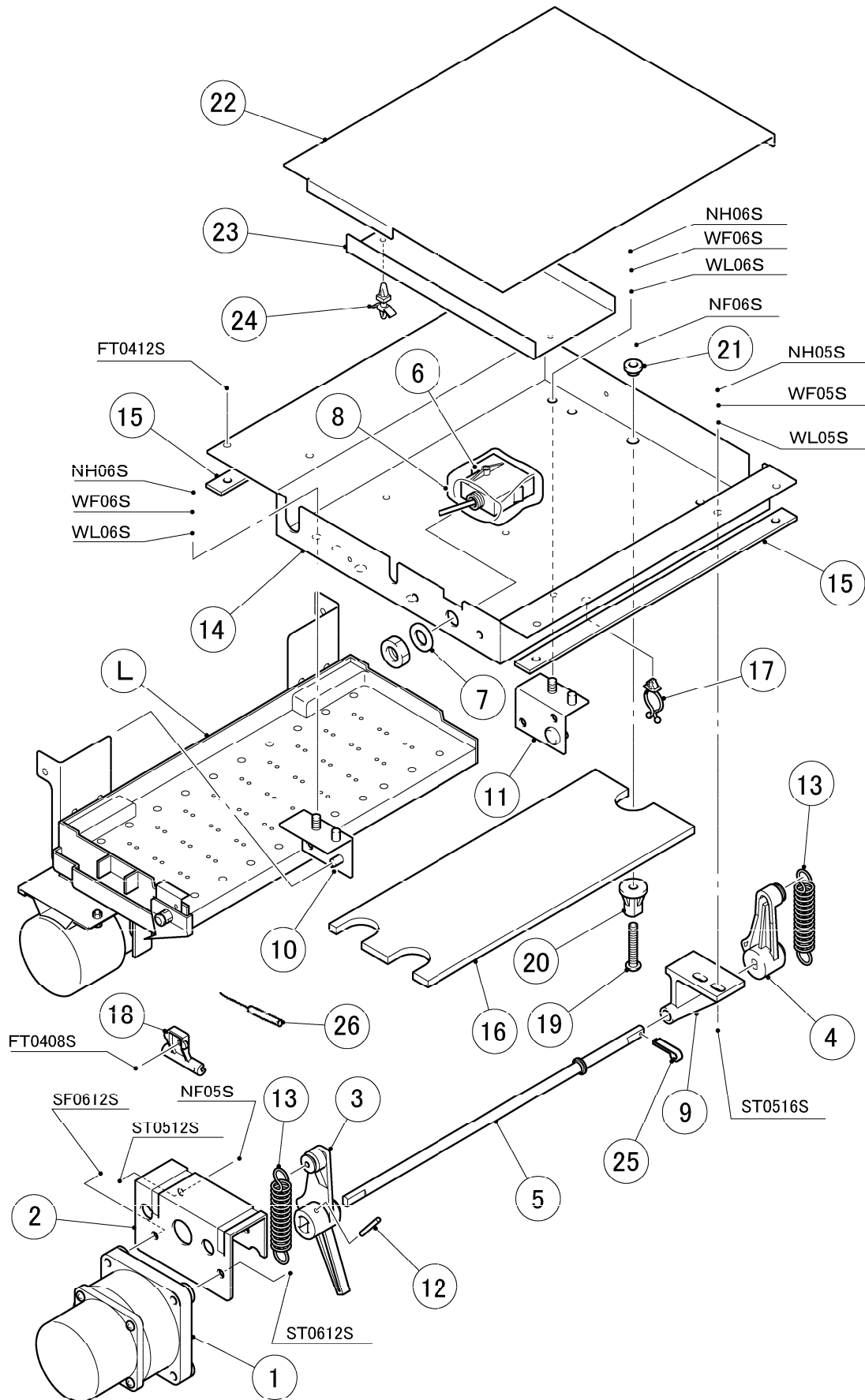
(H-0)(J-0)and later
(D-0)(E-1)(F-0)(G-0)
(A-1)(B-0)(B-1)(C-0)



DIM-30AE
DIM-30DE

E. ICE MAKING UNIT ASSY

(H-0(J-0)and later
(D-0)(E-1)(F-0)(G-0)
(A-1)(B-0)(B-1)(C-0)



HE,OCEANIA

MODEL : DIM-30AE,DIM-30DE				TITLE : E. ICE MAKING UNIT ASSY			
INDEX NO.	DESCRIPTION	MATERIAL OR MODEL NUMBER	PART NUMBER	REQ'D NUMBER			
				A-1 B-0	B-1,C-0 D-0	E-1,F-0 G-0,H-0 J-0	J-1 K-0 L-0
L	WATER PAN ASSY	-	2H5101A01	1	1	1	1
1	ACTUATOR MOTOR	SR65A41-11	434295-01	1	1	1	1
2	BRACKET - ACTUATOR MOTOR	G.S	3H1413-01	1	1	1	1
3	CAM (A)	PA	2H1204-01	1	1	1	1
4	CAM (B)	PA	3H2945-01	1	1	1	1
5	CAM SHAFT	S.S	3X5366G01	1	1	1	1
6	TOGGLE SWITCH	VAT4-71	431977-01	1	1	1	1
7	WASHER - TOGGLE SWITCH	S.S	406196-01	1	1	1	1
8	SWITCH COVER	VINYL	4X1559-03	1	1	1	1
9	CAM SHAFT HOLDER	ABS	307256-01	1	1	1	1
10	HANGER BRACKET (A) - WATER PAN	S.S	4H2652G01	1	1	1	1
11	HANGER BRACKET (B) - WATER PAN	S.S	4H2653G01	1	1	1	1
12	SPRING PIN	SUS 3 x 22	712S-0322	1	1	1	1
13	SPRING	S.S	4H1143-01	2	2	2	2
14	BRACKET - ICE MAKING MECHANISM	G.S	3X5367-01	1	1	1	1
15	SPACER	ABS	4X9131-01	2	2	2	2
16	INSULATION - ICE MAKING MECHANISM BRACKET	PE	4X9087-01	1	1	1	1
17	CLAMP	No. 2674	427902-02	1	1	1	1
18	HOLDER - THERMISTOR	PE	3H9642-01	1	1	1	1
19	SCREW - EVAPORATOR MOUNTING	S.S	4H2593-01	3	3	3	3
20	SPACER	AC	4H0471-01	3	3	3	3
21	WASHER	AC	4H0777-01	3	3	3	3
22	COVER - ICE MAKING MECHANISM BRACKET	PVC	4X9088-01	1	1	1	1
23	GUIDE - CONNECTOR	PVC	4X9089-01	1	1	1	1
24	BOARD SUPPORT	KGLS-4S	414929-02	3	3	3	3
25	SPLIT PIN	S.S, 2 x 12	711S-0212	1	1	1	1
26	THERMISTOR	-	425373-06	1	1	-	
			462976-02			1	1

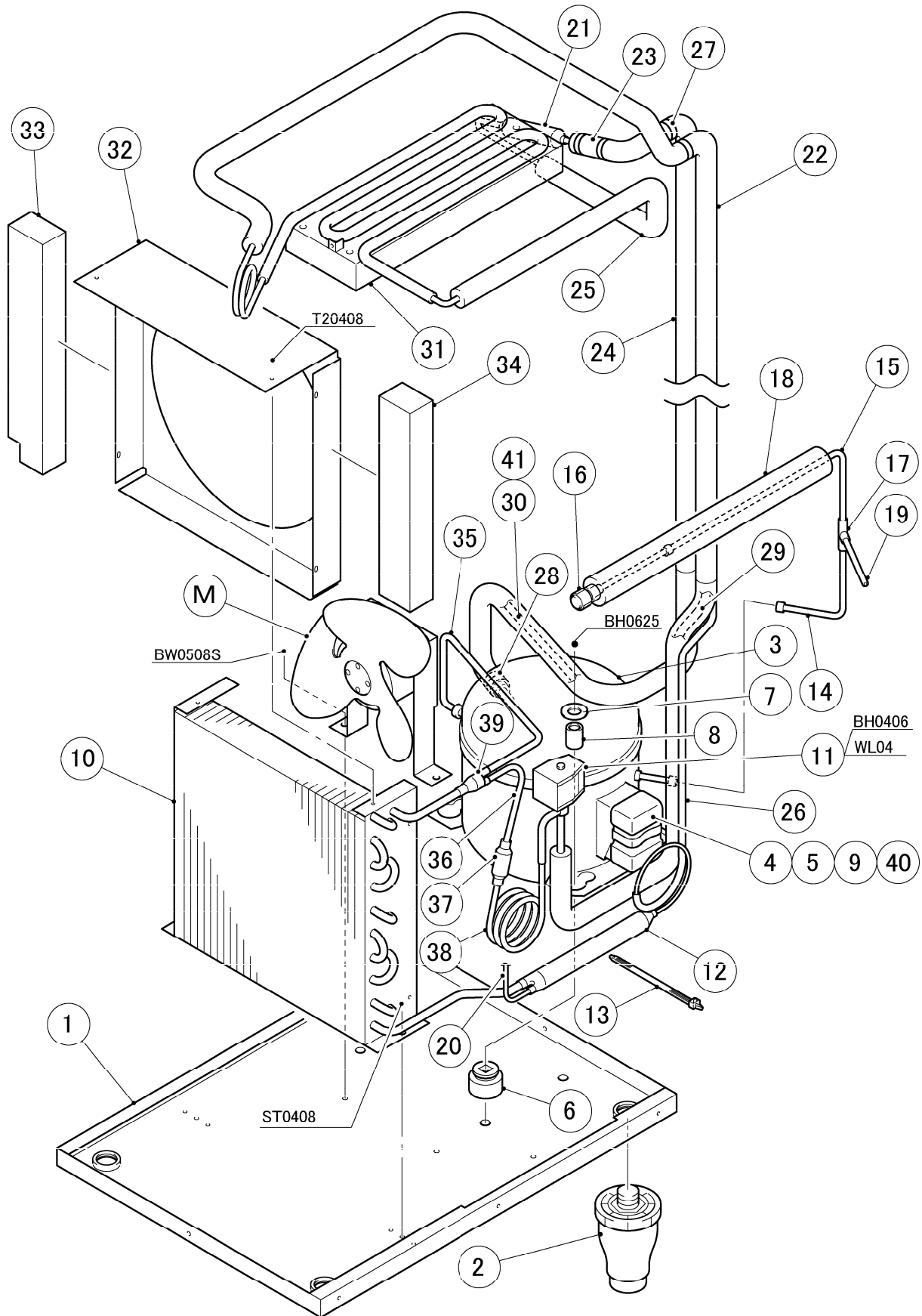
HE,OCEANIA

MODEL : DIM-30DE				TITLE : E. ICE MAKING UNIT ASSY			
INDEX NO.	DESCRIPTION	MATERIAL OR MODEL NUMBER	PART NUMBER	REQ'D NUMBER			
				L-1			
L	WATER PAN ASSY	-	2H5101A01	1			
1	ACTUATOR MOTOR	SR65A41-11	434295-01	1			
2	BRACKET - ACTUATOR MOTOR	G.S	3H1413-01	1			
3	CAM (A)	PA	2H1204-01	1			
4	CAM (B)	PA	3H2945-01	1			
5	CAM SHAFT	S.S	3X5366G01	1			
6	TOGGLE SWITCH	VAT4-71	431977-01	1			
7	WASHER - TOGGLE SWITCH	S.S	406196-01	1			
8	SWITCH COVER	VINYL	4X1559-03	1			
9	CAM SHAFT HOLDER	ABS	307256-01	1			
10	HANGER BRACKET (A) - WATER PAN	S.S	4H2652G01	1			
11	HANGER BRACKET (B) - WATER PAN	S.S	4H2653G01	1			
12	SPRING PIN	SUS 3 x 22	712S-0322	1			
13	SPRING	S.S	4H1143-01	2			
14	BRACKET - ICE MAKING MECHANISM	G.S	3X5367-01	1			
15	SPACER	ABS	4X9131-01	2			
16	INSULATION - ICE MAKING MECHANISM BRACKET	PE	4X9087-01	1			
17	CLAMP	No. 2674	427902-02	1			
18	HOLDER - THERMISTOR	PE	3H9642-01	1			
19	SCREW - EVAPORATOR MOUNTING	S.S	4H2593-01	3			
20	SPACER	AC	4H0471-01	3			
21	WASHER	AC	4H0777-01	3			
22	COVER - ICE MAKING MECHANISM BRACKET	PVC	4X9088-01	1			
23	GUIDE - CONNECTOR	PVC	4X9089-01	1			
24	BOARD SUPPORT	KGLS-4S	414929-02	3			
25	SPLIT PIN	S.S, 2 x 12	711S-0212	1			
26	THERMISTOR	-	462976-02	1			

DIM-30AE
DIM-30DE

F. REFRIGERATION ASSY

(H-0)(J-0)and later
(D-0)(E-1)(F-0)(G-0)
(A-1)(B-0)(B-1)(C-0)



HE,OCEANIA

MODEL : DIM-30AE,DIM-30DE				TITLE : F. REFRIGERATION ASSY			
INDEX NO.	DESCRIPTION	MATERIAL OR MODEL NUMBER	PART NUMBER	REQ'D NUMBER			
				A-1 B-0	B-1,C-0 D-0	E-1,F-0 G-0,H-0 J-0	J-1 K-0 L-0
M	FAN MOTOR ASSY	(S-9176)	3X5385A01	1	1	1	1
1	BASE	G.S	3X5742G01	1	1	1	1
2	LEG	SDKO-90H-NS	446729-02	4	4	4	4
3	COMPRESSOR	FR8.5G	450891-01	1	1	1	1
4	STARTING RELAY	117U6015	450893-01	1	1	1	1
5	STARTING CAPACITOR	117U5015	450898-01	1	1	1	1
6	RUBBER GROMMET	EPDM	450897-01	4	1	1	1
7	WASHER	-	450894-01	4	1	1	1
8	GROMMET SLEEVE	-	450895-01	4	4	4	4
9	CORD RELIEF	103N1006	450899-01	1	1	1	1
10	CONDENSER - AIR COOLED	-	2H1066-01	1	1	1	1
11	HOT GAS SOLENOID VALVE	AMS-24B10HD-1	418866-02	1	1	1	1
12	DRIER	CK-7861	444792-01	1	1	1	1
13	TIE	T30RSF	436156-01	1	1	1	1
14	PROCESS TUBE (A)	COPPER	4X9448-01	1	1	1	1
15	PROCESS TUBE (B)	COPPER	4X9455-01	1	1	1	1
16	ACCESS VALVE	TCJ-2F15NHD-1	455119-01	1	1	1	1
17	TEE	COPPER	417394-01	1	1	1	1
18	INSULATION TUBE	L=300	3X5743-06	1	1	1	1
19	PROCESS TUBE (C)	COPPER	4X3658-03	1	1	1	1
20	PROCESS TUBE (B)	COPPER	426590-01	1	1	1	1
21	HEAT EXCHANGER	COPPER	3X5398G01	1	1	1	1
22	COPPER TUBE - HOT GAS	COPPER	3X5399G01	1	1	1	1
23	INSULATION TUBE (A)	ø10 x ø20 x L200	3X5364-03	1	1	1	1
24	INSULATION TUBE (B)	L=1040	3X5364-04	1	1	1	1
25	INSULATION TUBE (C)	ø10 x ø20 x L500	3X5364-05	1	1	1	1
26	TUBE	L=450	3X5364-06	1	1	1	1
27	TIE	CV-100	7920-0002	4	4	4	4
28	TIE	CV-150	7920-0003	5	5	5	5
29	PIPE (B) - HOT GAS	COPPER	4X9109G01	1	1	1	1
30	PIPE (C) - LOW SIDE	COPPER	3X5744G01	1	1	1	1
31	EVAPORATOR	-	3X5333G01	1	1	1	1
32	SHROUD	G.S	2H5099-01	1	1	1	1

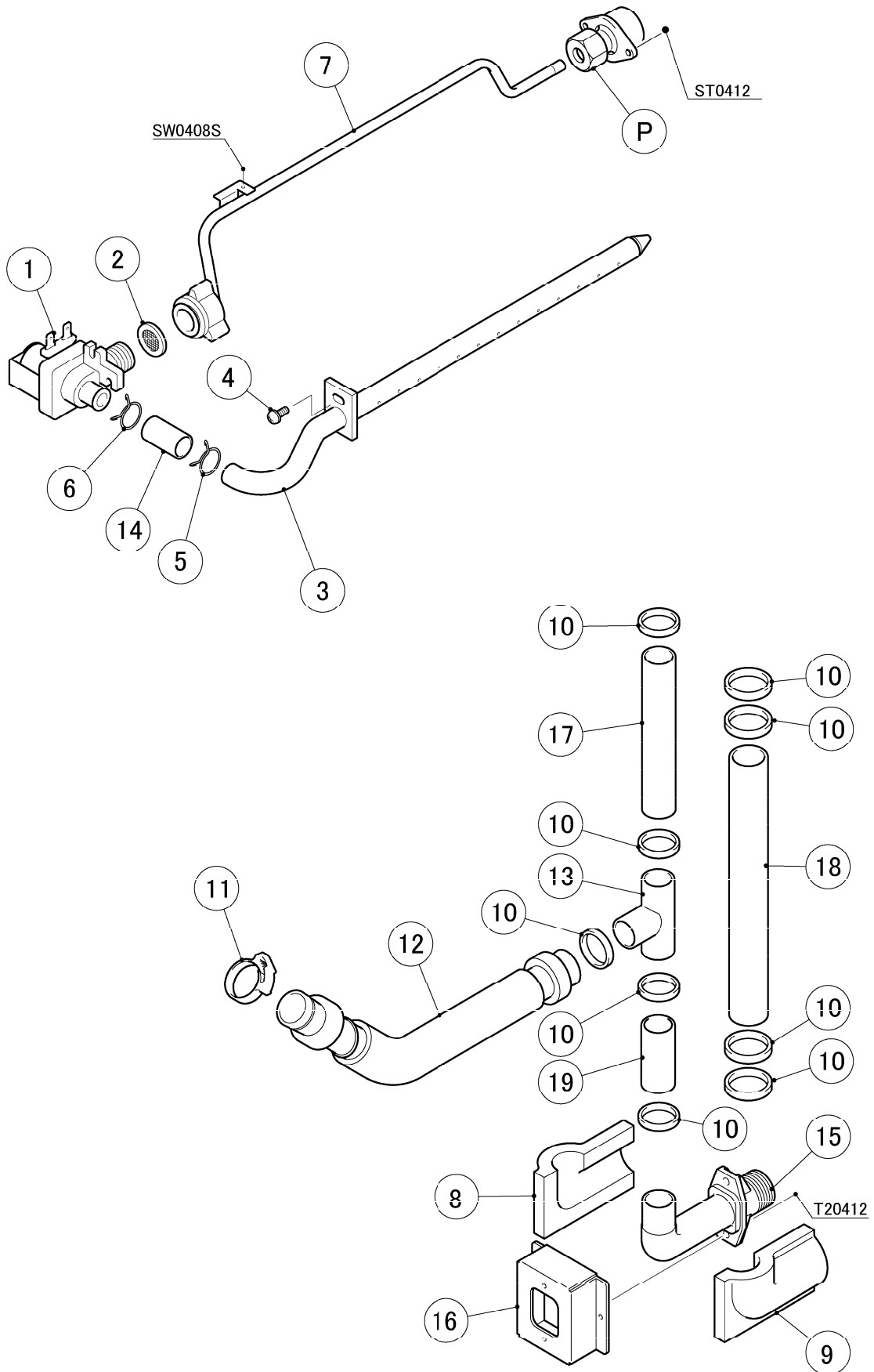
HE,OCEANIA

MODEL : DIM-30DE				TITLE : F. REFRIGERATION ASSY			
INDEX NO.	DESCRIPTION	MATERIAL OR MODEL NUMBER	PART NUMBER	REQ'D NUMBER			
				L-1			
M	FAN MOTOR ASSY	(S-9176)	3X5385A01	1			
1	BASE	G.S	3X5742G01	-			
			3X5742G02	1			
2	LEG	SDKO-90H-NS	446729-02	4			
3	COMPRESSOR	FR8.5G	450891-01	1			
4	STARTING RELAY	117U6015	450893-01	1			
5	STARTING CAPACITOR	117U5015	450898-01	1			
6	RUBBER GROMMET	EPDM	450897-01	1			
7	WASHER	-	450894-01	1			
8	GROMMET SLEEVE	-	450895-01	4			
9	CORD RELIEF	103N1006	450899-01	1			
10	CONDENSER - AIR COOLED	-	2H1066-01	1			
11	HOT GAS SOLENOID VALVE	AMS-24B10HD-1	418866-02	1			
12	DRIER	CK-7861	444792-01	1			
13	TIE	T30RSF	436156-01	1			
14	PROCESS TUBE (A)	COPPER	4X9448-01	1			
15	PROCESS TUBE (B)	COPPER	4X9455-01	1			
16	ACCESS VALVE	TCJ-2F15NHD-1	455119-01	1			
17	TEE	COPPER	417394-01	1			
18	INSULATION TUBE	L=300	3X5743-06	1			
19	PROCESS TUBE (C)	COPPER	4X3658-03	1			
20	PROCESS TUBE (B)	COPPER	426590-01	1			
21	HEAT EXCHANGER	COPPER	3X5398G01	1			
22	COPPER TUBE - HOT GAS	COPPER	3X5399G01	1			
23	INSULATION TUBE (A)	ø10 x ø20 x L200	3X5364-03	1			
24	INSULATION TUBE (B)	L=1040	3X5364-04	1			
25	INSULATION TUBE (C)	ø10 x ø20 x L500	3X5364-05	1			
26	TUBE	L=450	3X5364-06	1			
27	TIE	CV-100	7920-0002	4			
28	TIE	CV-150	7920-0003	5			
29	PIPE (B) - HOT GAS	COPPER	4X9109G01	1			
30	PIPE (C) - LOW SIDE	COPPER	3X5744G01	1			
31	EVAPORATOR	-	3X5333G01	1			

DIM-30AE
DIM-30DE

G. WATER CIRCUIT ASSY

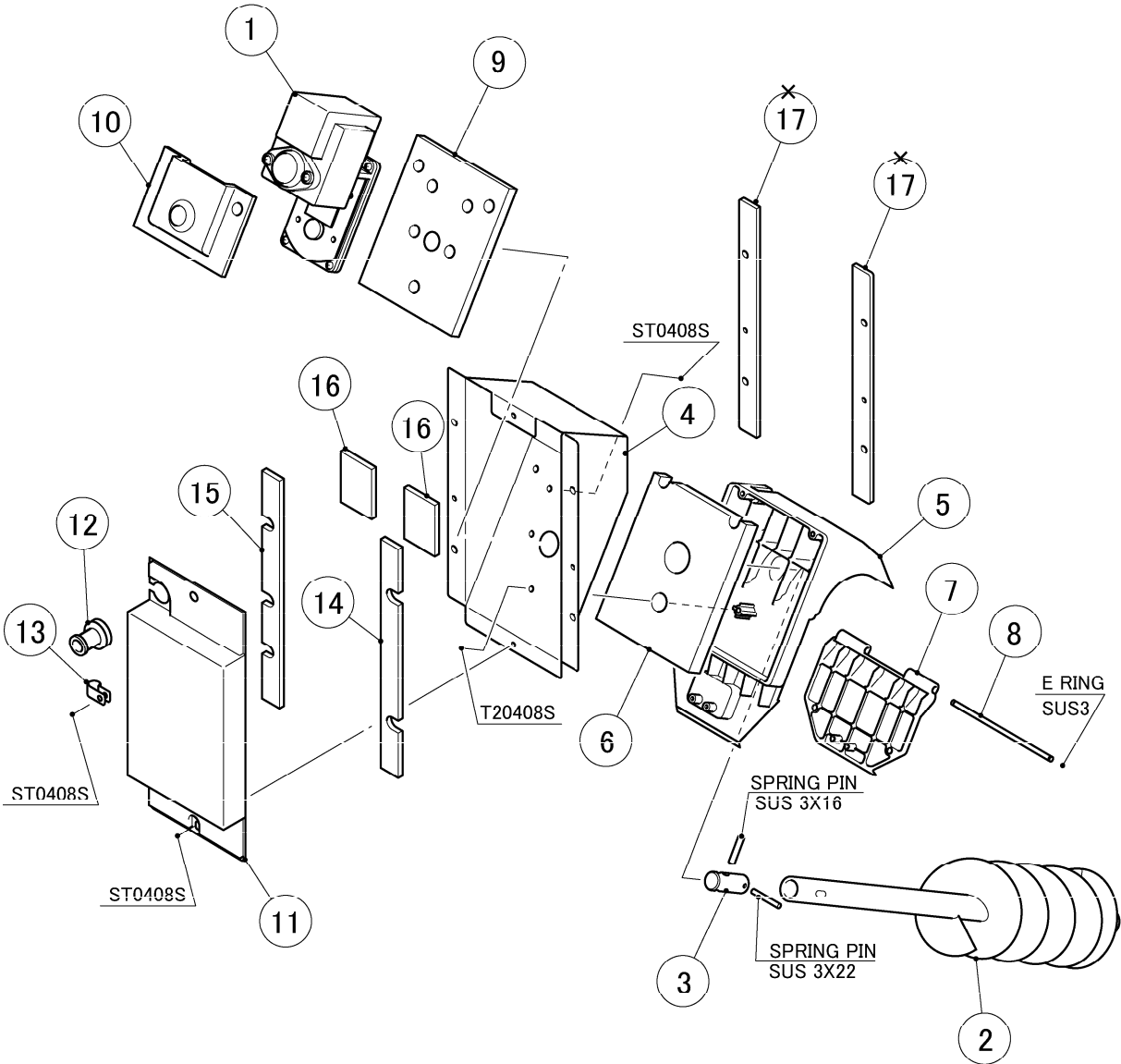
(H-0)(J-0)and later
(D-0)(E-1)(F-0)(G-0)
(A-1)(B-0)(B-1)(C-0)



DIM-30AE
DIM-30AE

H. DISPENSING MOTOR ASSY

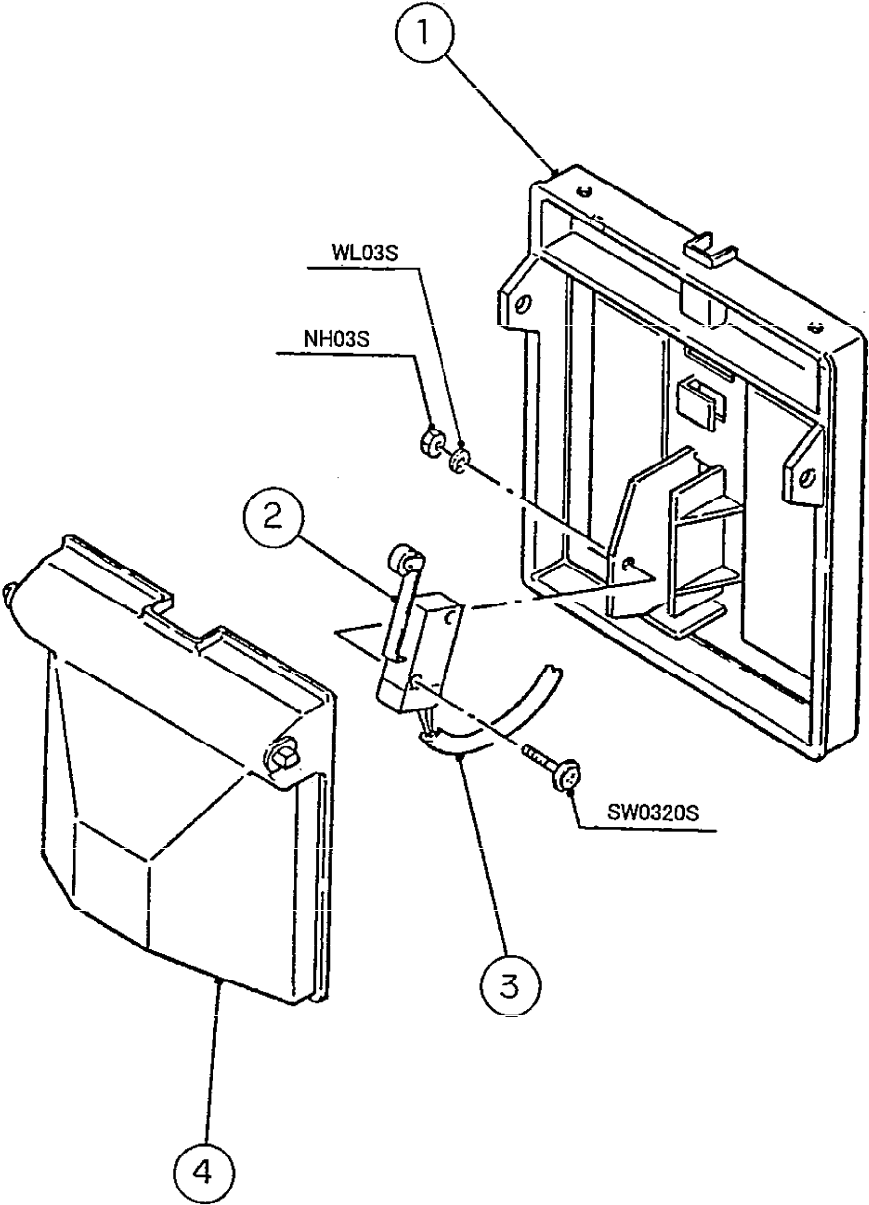
(H-0)(J-0)and later
(D-0)(E-1)(F-0)(G-0)
(A-1)(B-0)(B-1)(C-0)



DIM-30AE
DIM-30DE

K. BIN SWITCH ASSY

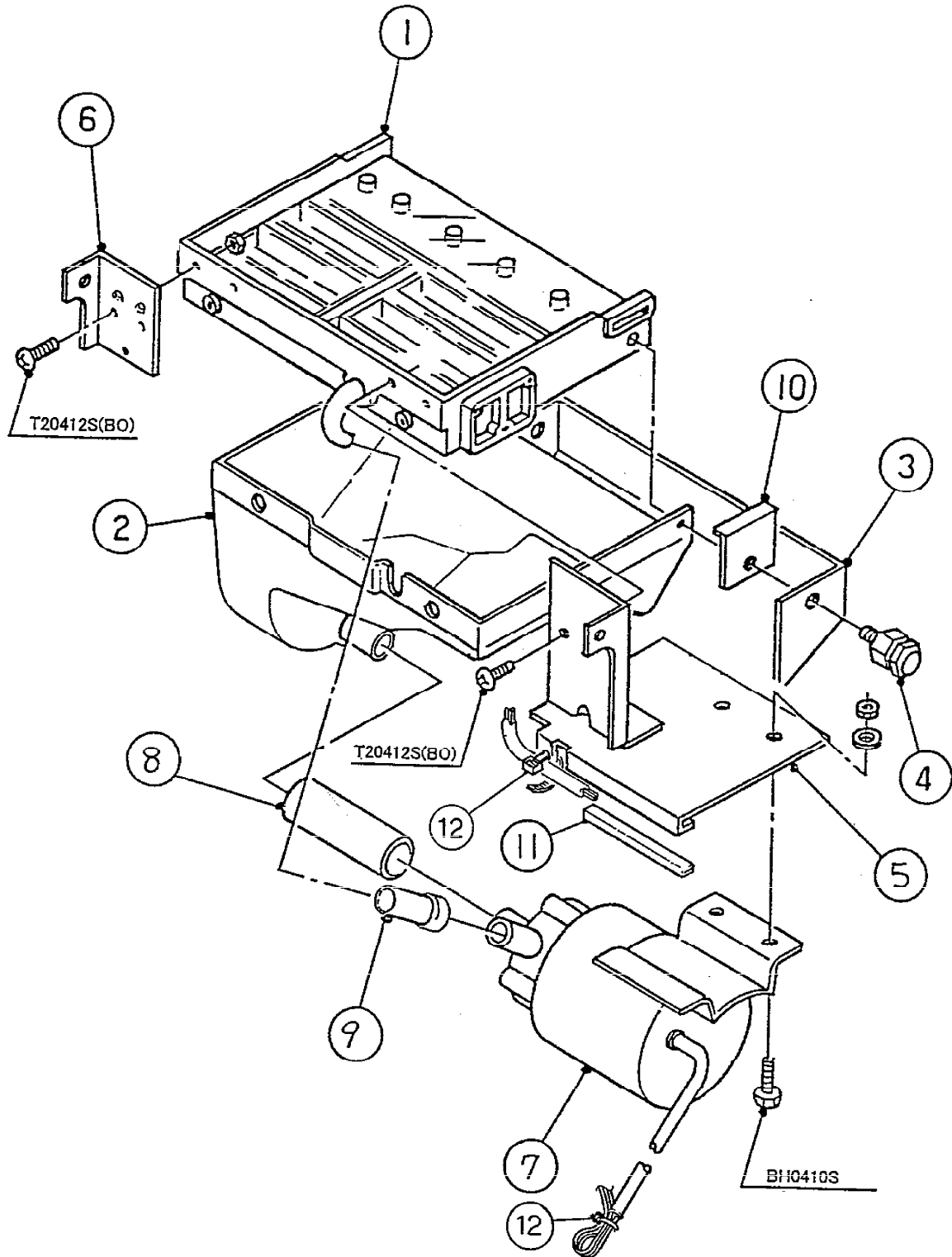
(H-0)(J-0)and later
(D-0)(E-1)(F-0)(G-0)
(A-1)(B-0)(B-1)(C-0)



DIM-30AE
DIM-30DE

L. WATER PAN ASSY

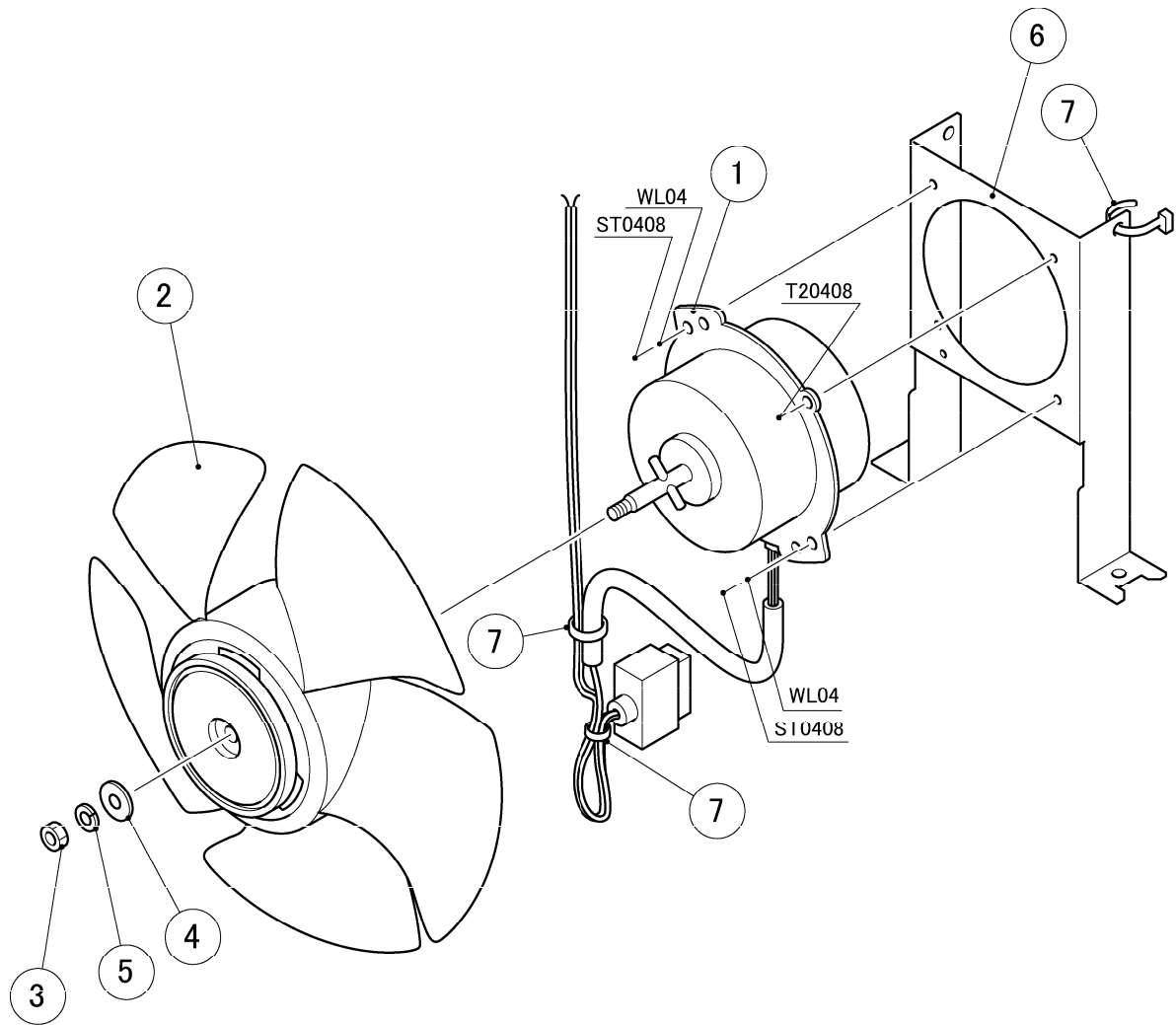
(H-0)(J-0)and later
(D-0)(E-1)(F-0)(G-0)
(A-1)(B-0)(B-1)(C-0)



DIM-30AE
DIM-30DE

M. FAN MOTOR ASSY

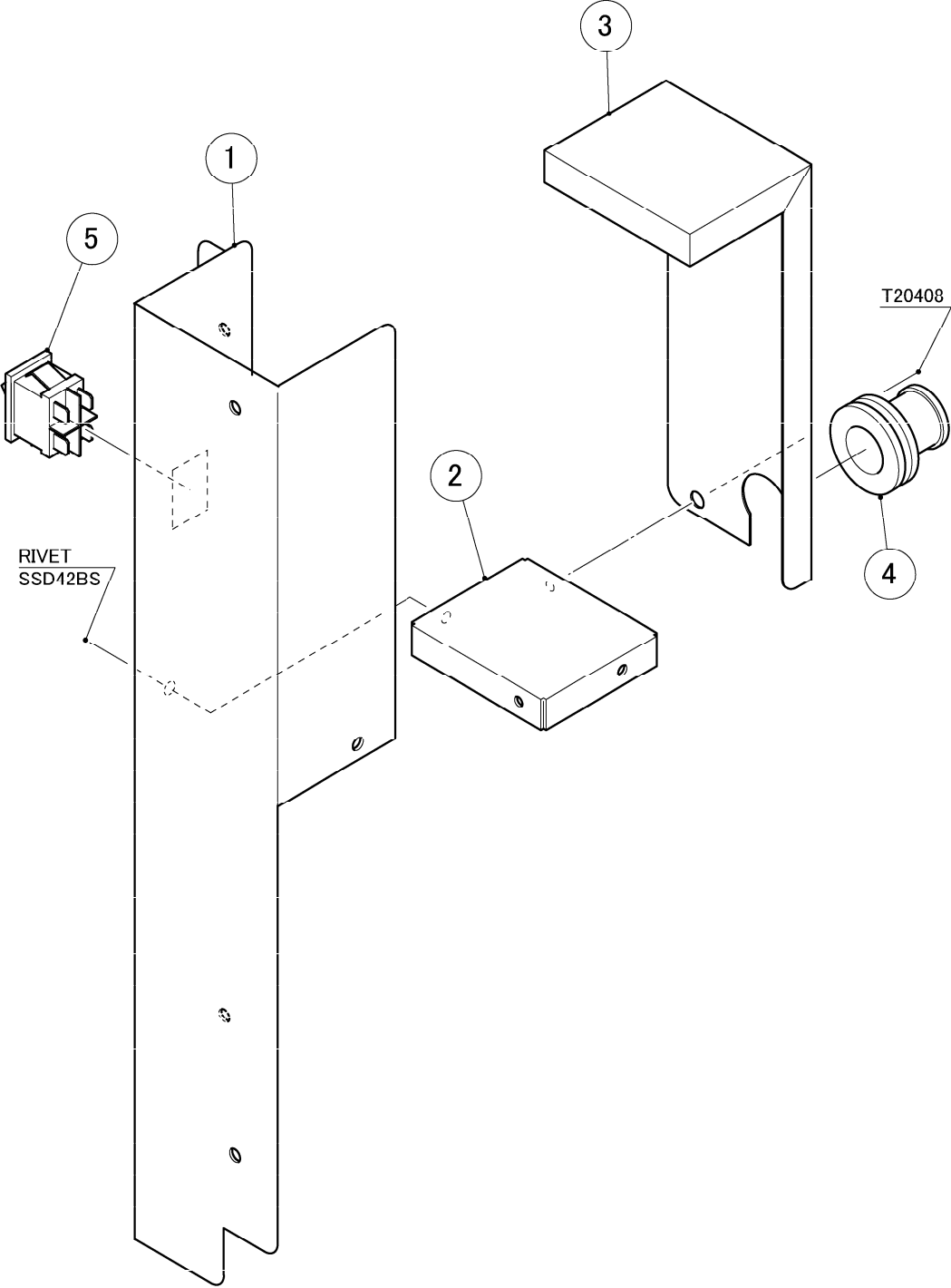
(H-0)(J-0)and later
(D-0)(E-1)(F-0)(G-0)
(A-1)(B-0)(B-1)(C-0)

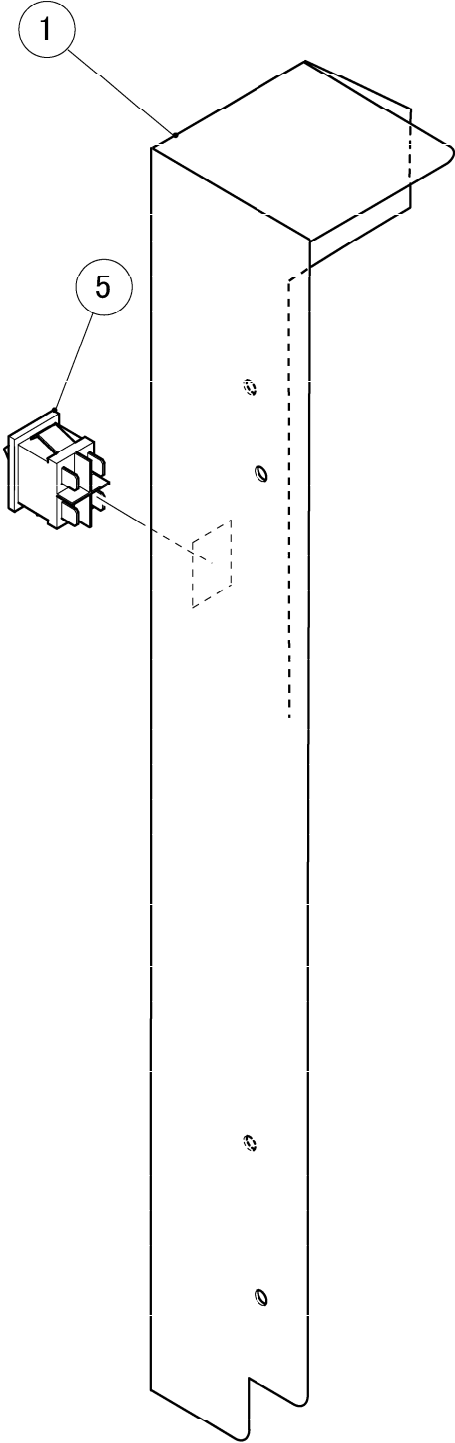


DIM-30AE
DIM-30DE

N. SWITCH BOX

(L-0)
(H-0)(J-0)(J-1)(K-0)
(D-0)(E-1)(F-0)(G-0)
(A-1)(B-0)(B-1)(C-0)



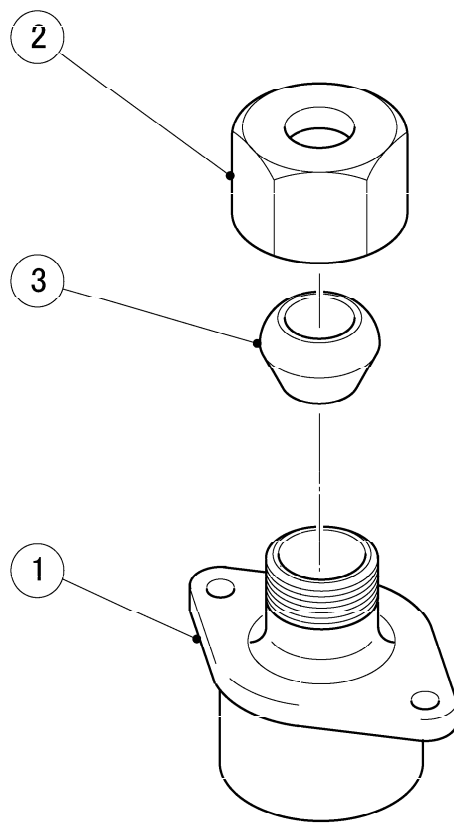


(S-0865)

DIM-30AE
DIM-30DE

P. FITTING (K) ASSY

(H-0)(J-0)and later
(D-0)(E-1)(F-0)(G-0)
(A-1)(B-0)(B-1)(C-0)



DIM-30AE
DIM-30DE

Q. ACCESSORIES

(H-0)(J-0)and later
(D-0)(E-1)(F-0)(G-0)
(A-1)(B-0)(B-1)(C-0)

